



The purpose of the **PETKUS A-Cleaner** is the high-quality cleaning of grain, pulses, oilseeds and other free flowing products. The cleaner can be used for pre-, intensive and seed cleaning. The high standard of cleaning is achieved by a combination of the screening process and the air aspiration system.

Advantages:

- Suitable for various cleaning processes due to extensive setting options
- High standard of cleaning and quality
- Simple and quick changing of screens due to the modular design
- Highly effective cleaning of the screen surface by means of a ball cleaning system and a scraper chain, thus achieving a reduction of the overall machine length
- Also suitable for not free flowing products and sections with high debris

Description:

The product to be cleaned is evenly distributed and fed into the cleaner by an inlet hopper. The product is moved from the inlet hopper into the pre-aspiration duct. Light rejects, husk and dust are separated here. Afterwards, the product is transported into the screen compartment with the three screen layers. Coarse (top screen) and light rejects (bottom screen) are separated here. The intermediate screen layer can either be used as a top screen or a bottom screen depending on the mode of cleaning desired. The intermediate screen layer can also be used as an intermediate screen for specific tasks in order to achieve better cleaning results due to the different screen perforations. The screened product is moved into the final aspiration chamber. The product is sorted by its bulk density and light rejects such as hollow grains, foreign particles and dust are separated here. All screens are cleaned with balls which are placed under the screens. The top screen layer is also additionally equipped with a scraper chain.

Construction:

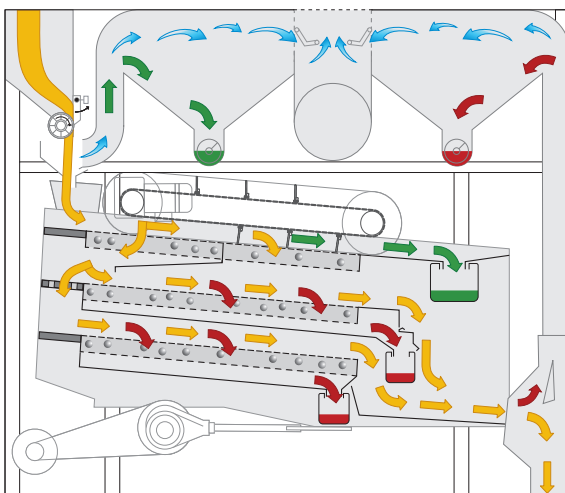
The A-Cleaner is equipped with an inlet hopper, one pre- and one final aspiration with a depositing chamber as well as one screen compartment with three screen layers. The various components of the machine (inlet hopper, discharge auger, scraper chain etc.) are operated by drive motors.

Standard Equipment:

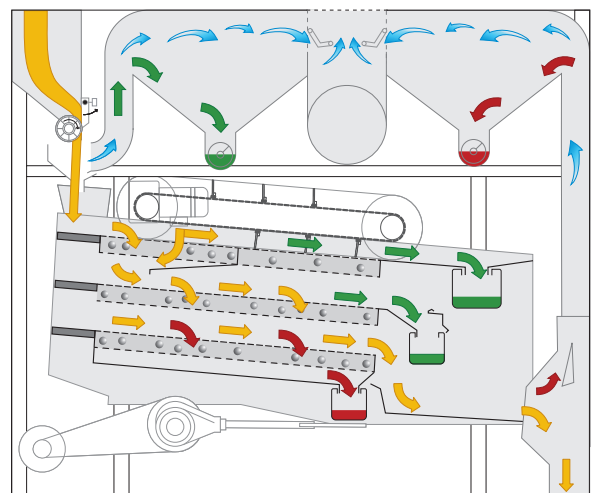
- Bolted frame made of painted sheet steel
- Screen compartment, pre- and final aspiration made of galvanized sheet steel
- Set of screens for screening diagram
- Scraper chain
- Drive units with gear motors

Options:

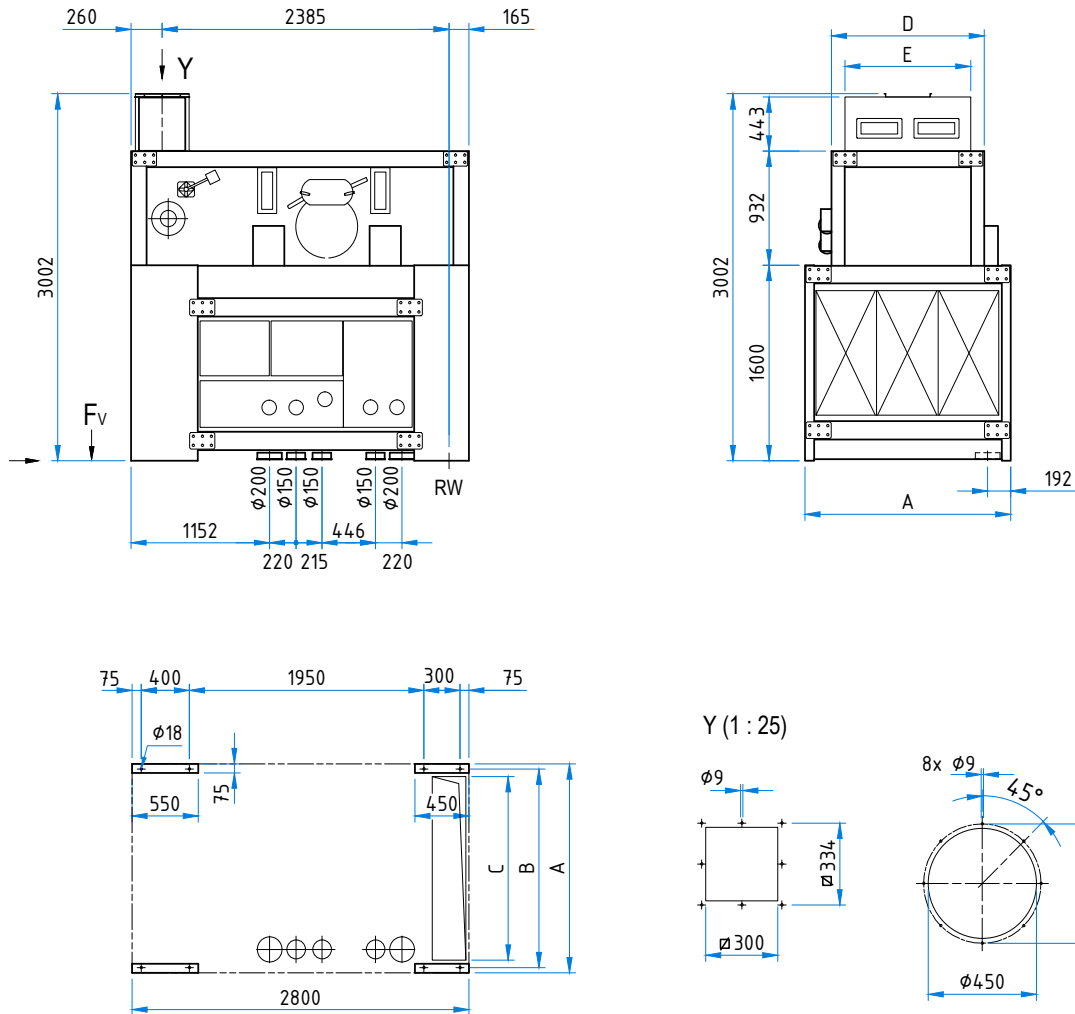
- Conversion kits (screens and accessories) for various screening diagrams
- Discharge left or right
- Aspiration connection above to opposite of control side



Seed cleaning for grain



Seed cleaning for fine seed



| Technical Data | | A 09 | A 12 |
|-------------------------|-------------------|------------|-------------|
| Capacity (Basis: wheat) | | | |
| Pre-cleaning | t/h | 40 | 50 |
| Industrial cleaning | t/h | 20 | 25 |
| Seed cleaning | t/h | 4 | 5 |
| Drives | | | |
| Fans | kW | 7.5 - 11.0 | 11.0 - 15.0 |
| Screen shoe | kW | 2.2 | 2.2 |
| Machine inlet drum | kW | 0.37 | 0.37 |
| Discharge screws | kW | 2 x 0.37 | 2 x 0.37 |
| Upper screen cleaning | kW | 0.37 | 0.37 |
| Air volume (wheat) | m ³ /h | 7 000 | 9 000 |
| Working width | mm | 900 | 1 200 |
| Screen surface | m ² | 3.78 | 5.04 |
| Weight | kg | 1 450 | 1 800 |
| | | | |
| | | | |

| Technical Data | | A 09 | A 12 |
|-----------------------------|------|-----------|-----------|
| No. of screen layers | pcs. | 3 | 3 |
| No. of upper screen frames | pcs. | 2 | 2 |
| No. of middle screen frames | pcs. | 2 | 2 |
| No. of lower screen frames | pcs. | 2 | 2 |
| No. of screen segments | | | |
| Upper screen | pcs. | 2 x 3 | 2 x 4 |
| Middle screen | pcs. | 2 x 3 | 2 x 4 |
| Lower screen | pcs. | 2 x 3 | 2 x 4 |
| Total No. | pcs. | 18 | 24 |
| Dimension: | | | |
| A | mm | 1 400 | 1 700 |
| B | mm | 1 325 | 1 625 |
| C | mm | 1 200 | 1 500 |
| D | mm | 960 | 1 270 |
| Speed | rpm | 330 | 330 |
| Load, horizontal (FH) | kN | ± 2.9 | ± 3.9 |
| Load, vertical (FV) | kN | 4.0 ± 1.6 | 5.0 ± 2.1 |

Technical alteration reserved.